



ZEN SEKAI GALLERY



presents

WILLIAM E. ELSTON



“WHAT’S WHAT”

November 4 through November 26, 2023



ZEN SEKAI GALLERY



presents

WILLIAM E. ELSTON



“WHAT’S WHAT”

November 4 through November 26, 2023



William E. Elston: "What's What"

This is a virtual replication of William E. Elston's "What's What" exhibition at Leonard Brothers Fine Art in Mount Vernon WA. Changes in placement and spacing were required to fit the virtual gallery, but hanging order is the same.



A (Somewhat Confabulatory) Biography

Bill Elston, the doyen of Pacific Northwest landscape painters, was born in an apartment above his father's barber shop and pool hall in Spokane Washington sometime in the middle of the twentieth century. Little is known of his early childhood, but it would have differed little from the carefree knockabout existence of many another Spokane lad of that era. He left home at an early age for reasons which are still open to conjecture, taking with him several useful survival skills, among them an excellent game of pool, a growing skill in karate, and an uncanny gift for ventriloquism. About his peregrinations about the continent a whole chapter might be written.

After sojourns in Montreal, where he learned to read, and Boston, where he learned to paint, he returned after decades to the Northwest, first to Spokane and the ruins of the chaotic home life he had fled all those years before and finally to Seattle with its burgeoning art scene.

In Seattle, Elston quickly rose to the top tier of landscapists of the local scene, his canvases, showing in galleries throughout the region, garnered the respect of his peers and the patronage of discerning collectors. Along with his successful studio practice, he developed a parallel career in teaching both painting and karate. Sadly, he has abandoned his pool hustling and ventriloquist act.

Eventually, Elston, despite his ongoing success in Seattle, moved north to Snohomish County to be near his beloved sister and to immerse himself in the splendors of the rural landscape that had become the core of his artistic imagery. He continues to paint, his territory ranging from Snohomish to Whatcom County. He continues to teach, spots his classes in *plein air* painting being much sought after. His paintings continue to get better and better.

David C Kane, 2023



Leonard Brothers Fine Art can be found at:

www.lbfa.us

Zen Sekai Gallery can be visited at:

www.zen-sekai.com

You can visit William E. Elston's website at:

www.williamelston.com



ZEN SEKAI GALLERY



presents

WILLIAM E. ELSTON



“WHAT’S WHAT”

November 4 through November 26, 2023



William E. Elston

GOOD MORNING!, 2023

30 x 30 x 1.5 inch (h x w x d)

oil on MDH panel

USD 3400



William E. Elston

MIDNIGHT, 2023

30 x 30 x 1.5 inch (h x w x d)

oil on MDH panel

USD 3400



William E. Elston

SAMMAMISH SLOUGH/BOTHELLLANDING, 2022

12 x 18 x 1.5 inch (h x w x d)

oil on ACMpanel

USD 1800





William E. Elston

EDMONDS MARSHPANO, 2023

8 x 30 x 1.5 inch (h x w x d)

oil on ACMpanel

USD 1200



William E. Elston

NEAR THE GAREDE L'EST, 2002

52 x 72 x 1.5 inch (h x w x d)

oil on canvas

USD 12500



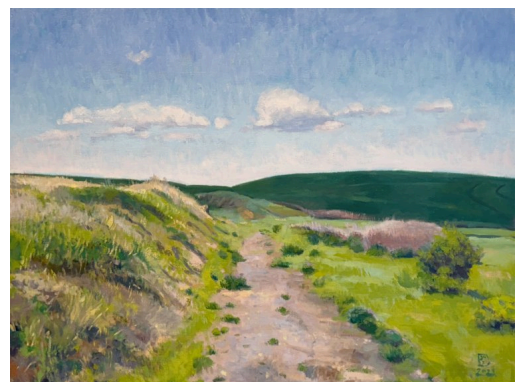
William E. Elston

TERRITORIALWA, 2023

36 x 48 x 1.5 inch (h x w x d)

oil on linen

USD 5800





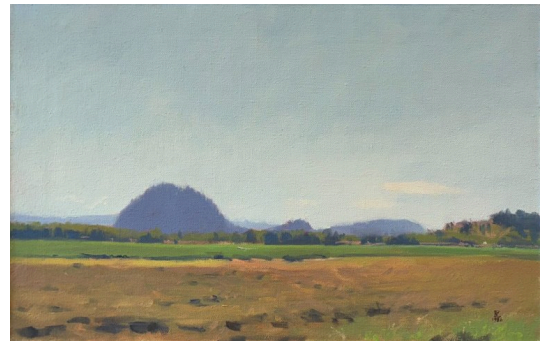
William E. Elston

IKA ISLAND, 1986

14 x 22 x 1.5 inch (h x w x d)

oil on canvas

USD 2200



William E. Elston

SNOHOMISH VALLEY APUNTE, 2018

8 x 10 x 1.5 inch (h x w x d)

oil on MDH panel

USD 800



William E. Elston

PALOUSE FALLS, 2022

20 x 16 x 1.5 inch (h x w x d)

oil on MDH panel

USD 2200





William E. Elston

MORNING FOG, LARSEN LAKE, 2018

8 x 10 x 1.5 inch (h x w x d)

oil on MDH panel

USD 800



William E. Elston

PUGET SOUND, 1990

11 x 15.5 x 1.5 inch (h x w x d)

oil on canvas

USD 950



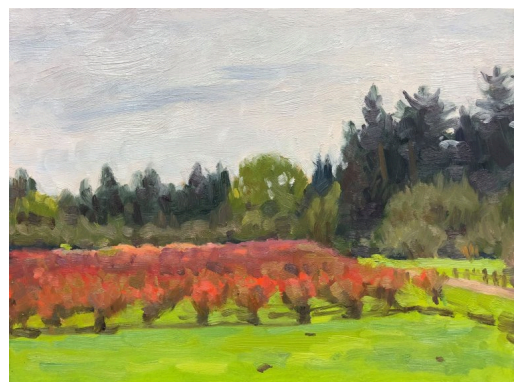
William E. Elston

LARSEN LAKE BLUEBERRY FARM APUNTE, 2018

9 x 12 x 1.5 inch (h x w x d)

oil on MDH panel

USD 850





William E. Elston

LUXEMBOURG GARDENS (LOVE IN PARIS), 2010

72 x 72 x 1.5 inch (h x w x d)

oil on canvas

USD 14000



William E. Elston

CADY PARK 2, 2022

16 x 20 x 1.5 inch (h x w x d)

oil on MDH panel

USD 2200



William E. Elston

LAKE UNION, 2003

30 x 48 x 1.5 inch (h x w x d)

oil on canvas

USD 5700





William E. Elston

FADING MOUNTAIN, 2023

12 x 20 x 1.5 inch (h x w x d)

oil on MDH panel

USD 2200



William E. Elston

HWY 14 TURNOUT, 2019

16 x 20 x 1.5 inch (h x w x d)

oil on MDH panel

USD 2200



William E. Elston

FOG AND EMPTINESS, 2023

36 x 24 x 1.5 inch (h x w x d)

oil on MDH panel

USD 2800





William E. Elston

I CAN SEE FOR MILES, 2023

18 x 36 x 1.5 inch (h x w x d)

oil on MDH panel

USD 2800



William E. Elston

FIELDS AND FOREVER, 2023

18 x 36 x 1.5 inch (h x w x d)

oil on MDH panel

USD 2800



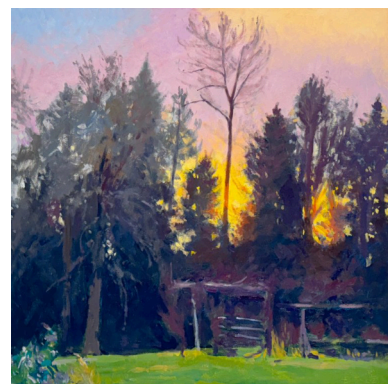
William E. Elston

FIERY SUNSET, 2023

30 x 30 x 1.5 inch (h x w x d)

oil on MDH panel

USD 3400





William E. Elston

LIFTING MIST, 2023

30 x 30 x 1.5 inch (h x w x d)

oil on MDH panel

USD 3400



William E. Elston

LET IT RAIN, 2023

30 x 30 x 1.5 inch (h x w x d)

oil on MDH panel

USD 3400





ZEN SEKAI GALLERY



Open Fri Sat Sun noon to 6, Or By
Appointment

511 South First Street

Mount Vernon WA

(206) 437-8534



“They say that painting is difficult, but then so is
levitation.”

– *William E. Elston*



ZEN SEKAI GALLERY

